

CULTURAL RESOURCES ASSESSMENT

TTM37731 COLE DEVELOPMENT PROJECT

CITY OF RIVERSIDE

RIVERSIDE COUNTY, CALIFORNIA



April 2020

CULTURAL RESOURCES ASSESSMENT

TTM37731 COLE DEVELOPMENT PROJECT

CITY OF RIVERSIDE

RIVERSIDE COUNTY, CALIFORNIA

Prepared for:

Mr. Nolan C. Leggio
Cayman Construction, Inc.
10621 Civic Center Drive
Rancho Cucamonga, California 91730

Prepared by:

Riordan Goodwin and Allegría García
LSA Associates, Inc.
1500 Iowa Avenue, Suite 200
Riverside, California 92507
(951) 781-9310

LSA Project No. DFD1906-03

National Archaeological Database Information:

Type of Study: Records Search, Survey, Negative Results

Sites Recorded: None

USGS Quadrangle: Riverside West and Steele Peak, California

Acreage: 35.8 acres (gross)



April 2020

MANAGEMENT SUMMARY

LSA was retained by Cayman Construction to conduct a cultural resources assessment for the proposed TTM37731 Cole Development Project in the City of Riverside (City), Riverside County, California. The City required this study as part of the environmental review process to comply with the California Environmental Quality Act (CEQA).

A cultural resources records search, additional research, Sacred Lands File search, and field survey were conducted for the project area. No cultural resources are documented within the project parcels and survey results were negative. However, due to poor surface visibility and the presence of more than 30 prehistoric resources within a mile, the project area retains some potential for surface and subsurface resources. Therefore, full-time monitoring of all grading and excavations in undisturbed soil is recommended.

In the event previously undocumented archaeological resources are identified during earthmoving activities, further work in the area should be halted until the nature and significance of the find can be assessed by a qualified archaeologist.

If human remains are encountered, State Health and Safety Code Section 7050.5 states that no further disturbance shall occur until the County Coroner has made a determination of origin and disposition pursuant to State Public Resources Code Section 5097.98. The County Coroner must be notified of the find immediately. If the remains are determined to be Native American, the County Coroner will notify the Native American Heritage Commission (NAHC), which will determine and notify a Most Likely Descendant (MLD). With the permission of the landowner or his/her authorized representative, the MLD may inspect the site of the discovery. The MLD shall complete the inspection and make recommendations or preferences for treatment within 48 hours of being granted access to the site. The MLD recommendations may include scientific removal and nondestructive analysis of human remains and items associated with Native American burials, preservation of Native American human remains and associated items in place, relinquishment of Native American human remains and associated items to the descendants for treatment, or any other culturally appropriate treatment.

TABLE OF CONTENTS

MANAGEMENT SUMMARY	i
TABLE OF CONTENTS	ii
FIGURE	ii
TABLE	iii
APPENDICES	iii
INTRODUCTION	1
SETTING	3
NATURAL SETTING	3
Climate and Watershed.....	3
Biology.....	3
Geology.....	3
CULTURAL SETTING.....	3
Prehistory	3
Ethnography	4
History	6
METHODS	8
RECORDS SEARCH	8
ADDITIONAL RESEARCH	8
NATIVE AMERICAN SCOPING	8
ARCHAEOLOGICAL FIELD SURVEY	8
RESULTS.....	9
RECORDS SEARCH	9
ADDITIONAL RESEARCH	11
NATIVE AMERICAN SCOPING	11
ARCHAEOLOGICAL FIELD SURVEY	11
RECOMMENDATIONS	12
REFERENCES	13
 FIGURE	
Figure 1: Regional and Project Location	2



TABLE

Table A: Resources Within One Mile of the APE 9

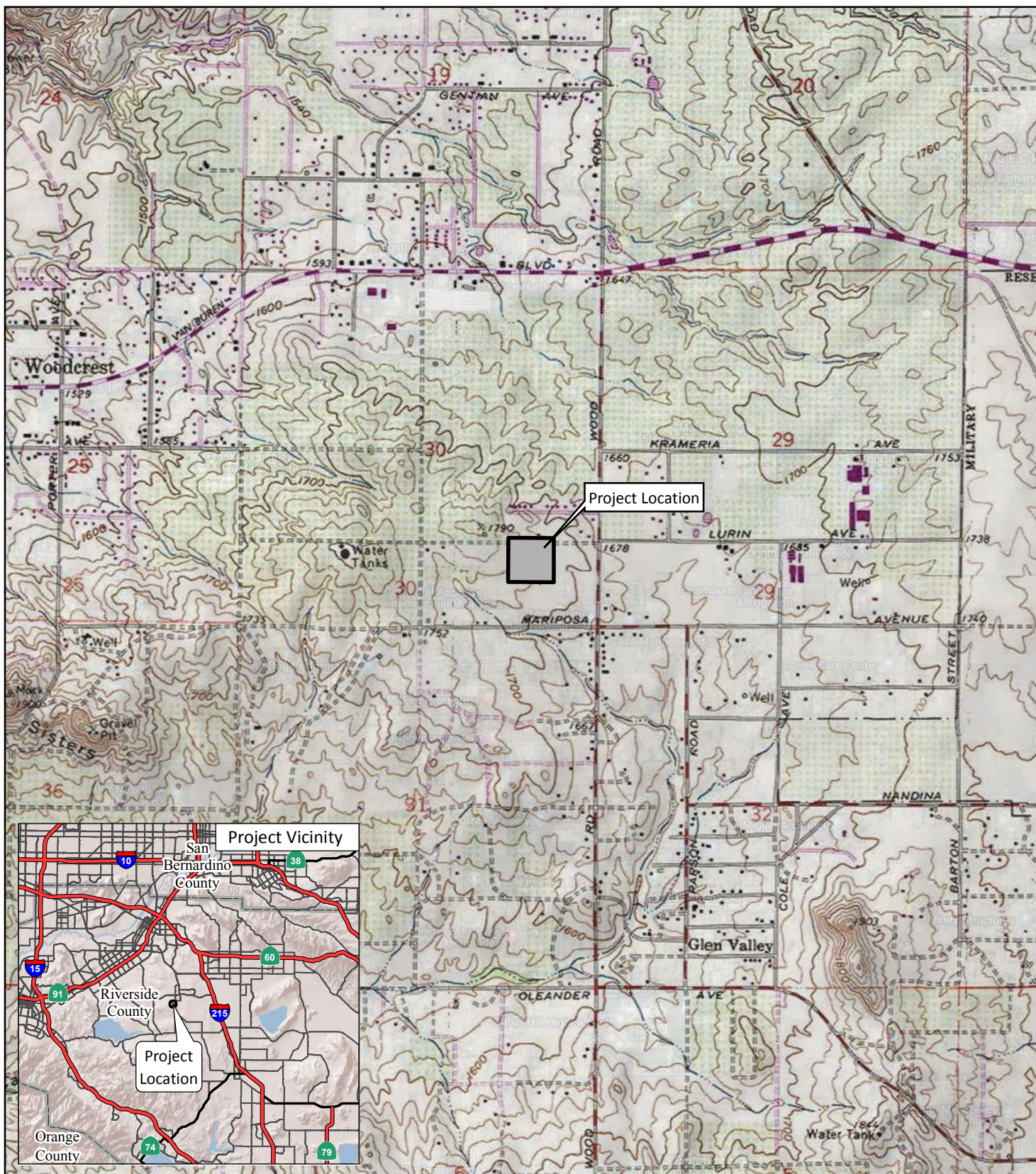
APPENDICES

- A: RECORDS SEARCH BIBLIOGRAPHY
- B: NATIVE AMERICAN SCOPING

INTRODUCTION

LSA was retained by Cayman Construction to conduct a cultural resources assessment for the proposed TTM37731 Cole Development Project in the City of Riverside (City), Riverside County, California. This assessment was completed pursuant to the California Environmental Quality Act (CEQA), Public Resources Code Chapter 2.6, Section 21083.2, and California Code of Regulations Title 14, Chapter 3, Article 5, Section 15064.5. The research and field surveys were conducted to determine whether the proposed project could adversely affect any resources considered historical resources by CEQA.

The project area is located at the southwest corner of Lurin and Cole Avenues in Riverside. It is bounded by suburban development to the north, south, east, and west. The project is depicted on the United States Geological Survey (USGS) *Riverside West* and *Steele Peak* topographic quadrangle maps in section 29 of Township 3 South, Range 4 West, San Bernardino Baseline and Meridian (USGS 1980; Figure 1). The project area is approximately 35.80 acres (gross), Assessor's Parcel Numbers 266-140-022, 266-140-029, 266-140-049, 266-140-050, and 266-140-030. The proposed project is a 138-unit single-family residential development.



LSA

LEGEND

 Project Location



0 1000 2000
FEET

FIGURE 1

Obsidian Development
Regional and Project Location

SOURCE: USGS 7.5' Quad - Riverside East (1980); Steele Peak (1978), CA

I:\DFD2001\GIS\MXD\ProjectLocation_Obsidian.mxd (1/14/2020)

SETTING

NATURAL SETTING

Climate and Watershed

The project region is characterized by a temperate climate, with dry, hot summers and moderate winters. Rainfall ranges from 12 to 16 inches annually (Beck and Haase 1974). Precipitation usually occurs in the form of winter rain, with warm monsoonal showers in summer. Two ephemeral drainages transect the project and the nearest natural reliable source of water is the Santa Ana River, which drains southwest approximately 9.0 miles west of the project.

Biology

At an average elevation of approximately 1,700 feet, the project is within the Lower Sonoran Life Zone of California (Schoenherr 1992), which ranges from below sea level to 3,500 feet. Project area vegetation included Cuba bean, cheeseweed mallow, fiddleneck, ground wreath, mustard, Russian thistle, star thistle, telegraph weed, xeric grasses, eucalyptus, olive, pepper and tamarisk trees. Extensive fauna are known locally, including many endemic species of reptiles, birds, and insects.

Geology

The project area is located at the northern end of the Peninsular Ranges Geomorphic Province that extends from the Transverse Ranges to the tip of Baja California and includes the Los Angeles Basin (California Geological Survey 2002; Norris and Webb 1976). This region is characterized by a series of mountain ranges separated by northwest-trending valleys subparallel to faults branching from the San Andreas Fault. The geology of this province is similar to that of the Sierra Nevada, with numerous rock outcroppings useful to the Native Americans for resource milling, shelter, and ceremonial art.

CULTURAL SETTING

Prehistory

Chronologies of prehistoric cultural change in Southern California have been attempted numerous times, and several are reviewed in Moratto (1984). No single description is universally accepted as the various chronologies are based primarily on material developments identified by researchers familiar with sites in a particular region and variation exists essentially due to the differences in those items found at the sites. Small differences occur over time and space, which combine to form patterns that are variously interpreted.

Currently, two primary regional culture chronology syntheses are commonly referenced in the archaeological literature. The first, Wallace (1955), describes four cultural horizons or time periods: Horizon I – Early Man (9000–6000 BC), Horizon II – Milling Stone Assemblages (6000–3000 BC), Horizon III – Intermediate Cultures (3000 BC–AD 500), and Horizon IV – Late Prehistoric Cultures (AD 500–historic contact). This chronology was refined (Wallace 1978) using absolute chronological dates obtained after 1955.

The second cultural chronology (Warren 1968) is based broadly on Southern California prehistoric cultures and was also revised (Warren 1984; Warren and Crabtree 1986). Warren's (1984) chronology includes five periods in prehistory: Lake Mojave (7000–5000 BC), Pinto (5000–2000 BC), Gypsum (2000 BC–AD 500), Saratoga Springs (AD 500–1200), and Protohistoric (AD 1200–historic contact). Changes in settlement pattern and subsistence focus are viewed as cultural adaptations to a changing environment, which begins with gradual environmental warming in the late Pleistocene, continues with the desiccation of the desert lakes, followed by a brief return to pluvial conditions, and concludes with a general warming and drying trend, with periodic reversals that continue to the present (Warren and Crabtree 1986).

Ethnography

The project area is near the intersection of the traditional cultural territories of the Cahuilla, Gabrielino, and Luiseño (Kroeber 1925; Heizer 1968). Tribal territories were somewhat fluid and changed over time. The first written accounts of these Southern California tribes are attributed to the mission fathers, and later documentation was by others as indicated below.

Cahuilla

The territory of the Cahuilla ranged from the San Bernardino Mountains south to Borrego Springs and the Chocolate Mountains, from Orocopia Mountain to the east, to the San Jacinto Plain and Palomar Mountain to the west (Bean 1978). Cahuilla territory lies within the geographic center of Southern California and encompassed diverse environments ranging from inland river valleys and foothills to mountains and desert (Bean and Shipek 1978).

Cahuilla villages, generally located near water sources within canyons or near alluvial fans, comprised groups of related individuals, generally from a single lineage, and the territory around the village was owned by the villagers (Bean 1978). Like other Native American groups in Southern California, the Cahuilla were semi-nomadic peoples leaving their villages and utilizing temporary campsites to exploit seasonably available plant and animal resources (James 1960).

Cahuilla subsistence was based primarily on acorns, honey mesquite, screw beans, piñon nuts, and cactus fruit, supplemented by a variety of wild fruits and berries, tubers, roots, and greens (Kroeber 1925; Heizer and Elsasser 1980). Hunting deer, rabbit, antelope, bighorn sheep, reptiles, small rodents, quail, doves, ducks, and reptiles by means of bows, throwing sticks, traps, and communal drives is documented (James 1960).

From the 1870s to the early 1890s, Cahuilla displaced from Rancho San Bernardino occupied a village along Spring Brook on the northwest slope of Little Rubidoux Mountain, which became known as the Spring Rancheria (Site 33-00678). The Rancheria Cahuilla worked in the Riverside area as agricultural and water system maintenance workers, as well as housekeepers. The settlement was abandoned in the 1890s during an economic downturn (Goodman 1993).

The Cahuilla were documented by Barrows (1900), Hooper (1920), and Strong (1929), among others.

Gabrielino

The territory of the Gabrielino included portions of Los Angeles, Orange, and San Bernardino Counties during ethnohistoric times, and also extended inland into northwestern Riverside County (Kroeber 1925; Heizer 1968). It encompassed an extremely diverse environment that included coastal beaches, lagoons and marshes, inland river valleys, foothills and mountains (Bean and Shipek 1978).

The Gabrielino caught and collected seasonally available food resources, and led a semi-sedentary lifestyle, living in permanent communities along inland watercourses and coastal estuaries. Individuals from these villages took advantage of the varied resources available. Seasonally, as foods became available, native groups moved to temporary camps to collect plant foods such as acorns, buckwheat, chía, berries, and fruits, and to conduct communal rabbit and deer hunts. They also established seasonal camps along the coast and near bays and estuaries to gather shellfish and hunt waterfowl (Hudson 1971).

The Gabrielino lived in small communities, which were the focus of family life. Patrilineally linked, extended families occupied each village (Kroeber 1925; Bean and Smith 1978). Both clans and villages were apparently exogamous, marrying individuals from outside the clan or village (Heizer 1968). Gabrielino villages were politically independent and were administered by a chief, who inherited his position from his father.

The Gabrielino were described by Johnston (1962), Blackburn (1962–1963), Hudson (1971), and others.

Luiseño

Prior to the Spanish occupation of California, the territory of the Luiseño extended along the coast from Agua Hedionda Creek to the south, Aliso Creek to the northwest, and the Elsinore Valley and Palomar Mountain to the east. These territorial boundaries were somewhat fluid and changed through time. They encompassed an extremely diverse environment that included coastal beaches, lagoons and marshes, inland river valleys and foothills, and mountain groves of oaks and evergreens (Bean and Shipek 1978). The Luiseño were first encountered by the Spanish missionaries in the late 18th century.

The Luiseño lived in small communities, which were the focus of family life. Patrilineally linked, extended families occupied each village (Kroeber 1925; Bean and Shipek 1978). Luiseño villages were politically independent and were administered by a chief who inherited his position from his father. Luiseño villages generally were located in valley bottoms, along streams, or along coastal strands near mountain ranges sheltered in coves or canyons, near a water source, and in a location that was easily defended.

The Luiseño took advantage of the varied resources available. Luiseño subsistence was based primarily on seeds (e.g., acorns, grass seed, manzanita, sunflower, sage, chía, and pine nuts) that were dried and ground to be cooked into a mush. Their diet also included game animals (e.g., deer, rabbit, jackrabbit, wood rat, mice, antelope, and many types of birds) (Bean and Shipek 1978). They established seasonal camps along the coast and near bays and estuaries to gather shellfish and hunt

waterfowl; and they utilized fire for crop management and engaged in communal rabbit drives (Bean and Shipek 1978).

The first written accounts of the Luiseño are attributed to the mission fathers. Later documentation was authored by Sparkman (1908), Kroeber (1925), White (1963), Oxendine (1983), and others.

With the Spanish intrusion came a drastic change in lifestyle for the natives of Southern California. Incorporation of the indigenous populations into the mission system led to the disruption of native cultures and changes in subsistence and land use practices. Mission San Gabriel, established in 1771, probably had a limited effect until the *asistencia* was established near Redlands, perhaps as early as 1819 (Harley 1988). Cattle ranch/farm settlements were established on or near Indian villages, primarily in the major drainages conducive to horticulture and animal husbandry. Within a short time, the missions controlled many ranchos where Indians lived and worked.

History

In California, the historic era is generally divided into three periods: the Spanish Period (1769 to 1821), the Mexican Period (1821 to 1848), and the American Period (1848 to present). Since there were no resources identified, the historic overview will focus on the County and local community during the American Period/20th century.

Riverside County (from Lech 2016)

The Southern Pacific Railroad completed its line from Los Angeles through the San Geronio Pass in 1876 bringing settlers into southwestern San Bernardino County, creating a boom of agricultural and land development during the 1880s. Although the towns of San Bernardino and Riverside (established in 1851 and 1870, respectively) both benefitted from the boom, by the last decade of the 19th century, social, political, and economic frictions developed between the two communities; Riverside was Republican and temperance minded, while San Bernardino was predominantly Democratic, had no prohibition on saloons, and was secessionist during the Civil War. Both towns were also vying for settlers and spheres of influence in an era in which some communities such as Grapeland (in what is today Fontana) and Sunnyvale (in Moreno Valley) were either stagnating or being abandoned. After litigation alleging preferential use of tax revenues by San Bernardino, Riverside residents joined (then) San Diego County residents in the Temecula and San Jacinto Valleys and the desert region (who disliked the great distance to their county seat) successfully petitioning the State legislature to form Riverside County in 1893. Transportation, agriculture, and the control of water continued to be central themes in the settlement, development, and growth of Riverside County (Robinson 1979).

The County thrived on its agricultural economy until the end of World War II, after which there was a gradual transition toward manufacturing, construction, commerce, transportation, and ultimately suburban development.

City of Riverside

The City of Riverside began as a colony created by John W. North, a real estate speculator from upstate New York, and James Greaves, his associate and fellow speculator. North and Greaves formed the Southern California Colony Association, which attracted settlers from eastern and Midwestern cities

eager to live in a warmer climate on inexpensive land. They created the Mile Square in 1870, a plot of land where colonists would first settle. In 1875, the Riverside Land and Irrigating Company succeeded the Southern California Colony Association and that same year, the City of Riverside was incorporated. During the Southern California land boom of the 1870s and 1880s, Riverside grew rapidly. The introduction of the navel orange in the mid-1870s gave the community's economy an important boost and led to the spread of citrus cultivation throughout Southern California with Riverside at the forefront of the industry (Patterson 1996). Riverside continued to prosper after Southern California's boom of the 1880s subsided and its thriving citriculture fostered the development of related industries such as fruit packing and packing equipment. These were followed by the establishment of unrelated industries such as aluminum, aerospace, and paper products, which sustained the City's prosperity during the 20th century (Patterson 1996). After World War II, residential construction displaced citrus groves and the economic base was transformed by the emergence modern industrial and commercial development.

METHODS

RECORDS SEARCH

On July 5, 2019 LSA Cultural Resources Analyst Allegria Garcia conducted a records search at the Eastern Information Center (EIC). See Appendix A. Data from a records search recently conducted for a nearby project were also collated and utilized for this project. The objectives of this data review were to (1) establish the status and extent of previously recorded sties, surveys and excavations within the project area and to (2) note what types of resources might be expected to occur within the proposed project based on the existing data from known cultural resources sites located within a 1-mile radius.

ADDITIONAL RESEARCH

In July 2019, LSA Archaeologist Riordan Goodwin conducted additional research, including review of historic period aerials and maps.

NATIVE AMERICAN SCOPING

In accordance with the City requirement for discretionary Tribal notification (“scoping”), LSA requested a review of the Sacred Lands File (SLF) and a list of Native American contacts from the Native American Heritage Commission (NAHC) for the project on July 1, 2019.

ARCHAEOLOGICAL FIELD SURVEY

On July 19, 2019, Mr. Goodwin and Ms. Garcia conducted an intensive pedestrian survey of the project area utilizing transects spaced by approximately 10 meters (30 feet). The purpose of this survey was to identify and document, prior to the beginning of ground-disturbing activities, any cultural resources and thus also to identify any area(s) that might be sensitive for buried cultural resources.

RESULTS

RECORDS SEARCH

Data from the EIC indicate there have been 39 cultural resource studies previously conducted within one mile of the proposed project, two of which included a portion of the project area, but neither of which documented any resources (Drover 1992; Mason 2005). Although no resources have been recorded within the project area, 41 have been documented within one mile, including 33 archaeological (prehistoric bedrock milling slicks and prehistoric bedrock milling stations) and 8 built environment (historic residences, a ranch complex, and former military barracks) resources (Table A). The nearest resource is a historic period residence (33-007826) approximately 0.11 mile (~600 feet) to the north; the nearest prehistoric resource is a bedrock milling feature (33-13836-CA-RIV-7563) approximately 1,500 feet to the west. Four of the built environment resources are listed in the Riverside County Historic Properties Directory (those with OHP numbers and Status Codes).

Table A: Resources Within One Mile of the APE

Primary #	Trinomial #	OHP #	Site Description	Status Code
33-001250	CA-RIV-001250	—	Prehistoric bedrock milling station	—
33-001260	CA-RIV-001260	—	Prehistoric bedrock milling slick	—
33-001261	CA-RIV-001261	—	Prehistoric bedrock milling station	—
33-001793	CA-RIV-001793	—	Prehistoric bedrock milling slick	—
33-001794	CA-RIV-001794	—	Prehistoric bedrock milling slick	—
33-001979	CA-RIV-001979	—	Prehistoric bedrock milling slick	—
33-003285	CA-RIV-0003285/H	—	Camp Haan, Southwest Branch, U.S. Disciplinary Barracks; historic foundations	—
33-003290	CA-RIV-003290	—	Prehistoric bedrock milling slick	—
33-003291	CA-RIV-003291	—	Prehistoric bedrock milling slick	—
33-003292	CA-RIV-003292	—	Prehistoric bedrock milling station	—
33-003293	CA-RIV-003293	—	Prehistoric bedrock milling station	—
33-003294	CA-RIV-003294	—	Prehistoric bedrock milling station	—
33-003295	CA-RIV-003295	—	Prehistoric bedrock milling slick	—
33-003296	CA-RIV-003296	—	Prehistoric bedrock milling station	—

Table A: Resources Within One Mile of the APE

Primary #	Trinomial #	OHP #	Site Description	Status Code
33-003297	CA-RIV-003297	—	Prehistoric bedrock milling station	—
33-003298	CA-RIV-003298	—	Prehistoric bedrock milling slick	—
33-003299	CA-RIV-003299	—	Prehistoric bedrock milling slick	—
33-003415	CA-RIV-003415	—	Prehistoric bedrock milling slick	—
33-003859	CA-RIV-003859	—	Prehistoric bedrock milling station	—
33-004710	CA-RIV-004710	—	Prehistoric bedrock milling slick	—
33-004735	CA-RIV-004735	—	Prehistoric bedrock milling station	—
33-004736	CA-RIV-004736	—	Prehistoric bedrock milling station	—
33-004737	CA-RIV-004737	—	Prehistoric bedrock milling stations	—
33-004738	CA-RIV-004738	—	Prehistoric bedrock milling stations	—
33-004742	CA-RIV-004742	—	Historic concrete foundations	—
33-004743	CA-RIV-004743	—	Prehistoric bedrock milling station	—
33-007815	—	062749	Leydorf Farms; 19931 Krameria Avenue; c. 1920 ranch complex	5S2
33-007817	—	062750	18461 Mariposa Avenue; c. 1940 church	7R
33-007826	—	062759	Dant Ranch; 16698 Dant Street; historic ranch complex	5S2
33-007827	—	062760	17140 Parsons Road; historic residence	5S2
33-008041	CA-RIV-005991	—	Prehistoric bedrock milling slick	—
33-008042	CA-RIV-005992	—	Prehistoric bedrock milling station	—
33-008043	CA-RIV-005993	—	Prehistoric bedrock milling station	—
33-008051	CA-RIV-006001	—	Prehistoric bedrock milling slick	—
33-008052	CA-RIV-006002	—	Prehistoric bedrock milling slick	—
33-013836	CA-RIV-007563	—	Prehistoric bedrock milling station	—

Table A: Resources Within One Mile of the APE

Primary #	Trinomial #	OHP #	Site Description	Status Code
33-014873	CA-RIV-007928	—	Prehistoric bedrock milling slick	—
33-024860	CA-RIV-012322	—	Historic antenna towers	—
33-026411	CA-RIV-012424	—	Prehistoric bedrock milling station	—
33-026663	CA-RIV-012562	—	Prehistoric bedrock milling site	—
33-028499	—	—	Historic residence; c. 1948–1966	—

ADDITIONAL RESEARCH

Online research revealed agricultural cultivation within the project parcels during the 1940s and 1970s into the 2000s, but no buildings or structures during the historic-period (HistoricAerials.com 1948, 1978, 2002; USGS 1953, 1980).

NATIVE AMERICAN SCOPING

The NAHC responded on July 18, 2019, indicating that the SLF search failed to indicate the presence of Native American cultural resources within the project, and provided a list of 18 Native American representatives for notification (Appendix B). All of the designated representatives were notified of the project via email on July 19, 2019. Ms. Ebru T. Ozdil (Pechanga Band of Mission Indians) responded on behalf of Paul Macarro on July 19, 2019, indicating that for future projects, scoping notices should be sent directly to her rather than Mr. Macarro. No comment was made regarding the proposed project. Mr. Bobby Ray Esparza (Cahuilla Band of Indians) responded on behalf of Daniel Salgado on July 24, 2019 indicating that although the Cahuilla do not have any knowledge of any cultural resources within or near the project area and it is outside their reservation boundary, it is within their traditional land use area. Mr. Estrada requested a cultural monitor be present during all ground-disturbing activities and be notified with the project moving forward. Ms. Dorothy Willis (Los Coyotes Band of Mission Indians) responded on July 26, 2019, stating that the information given would be reviewed and that the message's intended recipient (John Perada) was no longer at the office; for future projects, scoping notices should be sent to the current Environmental Department Director, Jacob Norte. No response was received from any of the other individuals contacted.

ARCHAEOLOGICAL FIELD SURVEY

The July 19, 2019, survey revealed that the project area has been subject to disturbance from weed abatement disking. Visibility was poor (approximately 20%), with most of the ground surface obscured by vegetation. Soils are alluvium. Recent (mid-1970s) wind machine foundation slabs were noted, along with sparse modern refuse and building debris on the periphery of the project parcels. No cultural resources were identified.

RECOMMENDATIONS

A cultural resources records search, additional research, and field surveys were conducted for the project area. No cultural resources have been previously documented within or adjacent to the project parcels and survey results were negative. However, due to poor surface visibility and the presence of more than 30 prehistoric resources within a mile, the project area retains some potential for surface and subsurface resources. Therefore, full-time monitoring of all grading and excavations in undisturbed soil is recommended.

In the event that archaeological materials are encountered during construction, all construction work should be halted and a qualified archaeologist consulted to determine the appropriate treatment of the discovery (California Code of Regulations, Title 14, Chapter 3, Section 15064.5(f)).

If human remains are encountered, State Health and Safety Code Section 7050.5 states that no further disturbance shall occur until the County Coroner has made a determination of origin and disposition pursuant to Public Resources Code Section 5097.98. The County Coroner must be notified of the find immediately. If the remains are determined to be Native American, the County Coroner will notify the NAHC, which will determine and notify an MLD. With the permission of the landowner or his/her authorized representative, the MLD may inspect the site of the discovery. The MLD shall complete the inspection within 48 hours of notification by the NAHC. The MLD will have the opportunity to offer recommendations for the disposition of the remains.

REFERENCES

Barrows, David Prescott

- 1900 *The Ethno-botany of the Coahilla [sic] Indians of Southern California*. Chicago: University of Chicago Press.

Bean, Lowell John

- 1978 Cahuilla. In *California*, edited by R.F. Heizer, pp. 575–587. *Handbook of North American Indians*, vol. 8, W.C. Sturtevant, general editor, Smithsonian Institution, Washington, D.C.

Bean, Lowell John, and Charles R. Smith

- 1978 Gabrielino. In *California*, edited by R.F. Heizer, pp. 538–549. *Handbook of North American Indians*, vol. 8, W.C. Sturtevant, general editor, Smithsonian Institution, Washington, D.C.

Bean, Lowell John, and Florence C. Shippek

- 1978 Luiseño. In *California*, edited by R.F. Heizer, pp. 550–563. *Handbook of North American Indians*, vol. 8, W.C. Sturtevant, general editor, Smithsonian Institution, Washington, D.C.

Beck, Warren A., and Ynez D. Haase

- 1974 *Historical Atlas of California*. Norman, Oklahoma: University of Oklahoma Press.

Blackburn, Thomas C.

- 1962–1963 Ethnohistoric Descriptions of Gabrielino Material Culture. Annual Reports of the University of California Archaeological Survey 5.

California Geological Survey

- 2002 *California Geomorphic Provinces*. California Geologic Survey Note 36. California Department of Conservation.

Drover, E. Christopher

- 1992 *A Cultural Resources Assessment of the 800 acre Alta Cresta Ranch Specific Plan, Riverside East-Steele Peak USGS Quadrangles, Woodcrest, California*.

Goodman, John D.

- 1993 Spring Rancheria: Archaeological Investigations of a Transient Cahuilla Village in Early Riverside, California. Unpublished thesis on file at the Eastern Information Center, University of California Riverside.

Harley, R. Bruce

- 1988 Rev. Juan Caballeria: Historian or Storyteller? Rethinking the 1810 Dumetz Expedition. *San Bernardino County Museum Quarterly* 35(2), 42p.

Heizer, Robert F.

- 1968 The Indians of Los Angeles County. Hugo Reid's Letter of 1852. Southwest Museum Papers 21. Los Angeles.

Heizer, Robert F., and Albert B. Elsasser

- 1980 *The Natural World of the California Indians*. University of California Press, Berkeley and Los Angeles.

HistoricAerials.com

- 1948 Aerial photograph of project area.
1978 Aerial photograph of project area.
2002 Aerial photograph of project area.

Hooper, Lucile

- 1920 *The Cahuilla Indians*. University of California Publication in American Archaeology and Ethnology. Vol. 16 No. 6. Reprinted by Malki Museum Press. Banning, California.

Hudson, Dee T.

- 1971 Proto-Gabrielino Patterns of Territorial Organization in South Coastal California. *Pacific Coast Archaeological Society Quarterly* 5(1). Costa Mesa, California.

James, Harry C.

- 1960 *The Cahuilla Indians*. Los Angeles: Westernlore Press. Reprinted in 1969 and 1985 by Malki Museum Press. Banning, California.

Johnston, Bernice E.

- 1962 *California's Gabrielino Indians*. (Frederick Webb Hodge Anniversary Publication Fund 8) Los Angeles: Southwest Museum.

Kroeber, Alfred L.

- 1925 *Handbook of the Indians of California*. Bureau of American Ethnology Bulletin No. 78 Washington D.C.: Smithsonian Institute. Reprinted in 1976, New York: Dover Publications.

Lech, Steve

- 2016 History of Riverside County. (<http://www.riversidecountyhistory.org>).

Mason, Roger D.

- 2005 *Phase I Archaeological Survey Report for the Chen Parcels (APN-266-140-021, -022 -002) Riverside County, CA*. ECRPS Consulting Inc.

Moratto, Michael J.

- 1984 *California Archaeology*. San Diego: Academic Press.

Norris, R.M., and R.W. Webb

- 1976 *Geology of California*. New York: John Wiley and Sons, Inc. 379 pp.

Oxendine, Joan

- 1983 *The Luiseño Village During the Late Prehistoric Era*. Unpublished Ph.D. dissertation, Department of Anthropology, University of California, Riverside.

Patterson, Tom

- 1996 A Colony for California, the Museum Press of the Riverside Museum Associates, Riverside, California.

Robinson, W.W.

- 1979 *Land in California*. University of California Press, Berkeley and Los Angeles.

Schoenherr, Allan A.

- 1992 *A Natural History of California*. University of California Press, Berkeley and Los Angeles.

Shipley, William F.

- 1978 Native Languages of California. In R. Heizer ed., *Handbook of North American Indians*, vol. 8, California, pp. 80–90. Smithsonian Institution, Washington D.C.

Sparkman, Philip S.

- 1908 The Culture of the Luiseño Indians. *University of California Publications in American Archaeology and Ethnology* 8(4). Berkeley.

Strong, William D.

- 1929 Aboriginal Society in Southern California. *University of California Publications in American Archaeology and Ethnology* 26(1): 1–358. Berkeley.

United States Geological Survey (USGS)

- 1953 *Steele Peak, California* 7.5- minute topographic quadrangle map
1980 *Riverside West, California* 7.5-minute topographic quadrangle map.

Wallace, William J.

- 1955 A Suggested Chronology for Southern California Coastal Archaeology. *Southwestern Journal of Anthropology* 11(3):214–230.
1978 Post-Pleistocene Archaeology. In California, edited by R. Heizer, pp. 550–563. *Handbook of North American Indians*, Vol. 8. W.C. Sturtevant, general editor. Smithsonian Institution, Washington, D.C.

Warren, Claude N.

- 1968 Cultural Tradition and Ecological Adaptation on the Southern California Coast. *Eastern New Mexico University Contributions in Anthropology* 1(3). Portales.
1984 The Desert Region. In *California Archaeology*, by M. Moratto with contributions by D.A. Fredrickson, C. Raven, and C. N. Warren, pp. 339–430. Academic Press, Orlando, Florida.

Warren, Claude N., and Robert H. Crabtree

- 1986 Prehistory of the Southwestern Area. In W.L. D’Azevedo ed., *Handbook of the North American Indians*, Vol. 11, *Great Basin*, pp. 183–193. Washington D.C.: Smithsonian Institution.

White, Raymond C.

1963 Luiseño Social Organization. University of California. *Publications in American Archaeology and Ethnology*. 48 (2):91–194.

APPENDIX A

RECORDS SEARCH BIBLIOGRAPHY

Report List

Report No.	Other IDs	Year	Author(s)	Title	Affiliation	Resources
RI-00002	NADB-R - 1080003; Voided - MF-0003	1953	Malcolm J. Rogers	Miscellaneous Field Notes - Riverside County. San Diego Museum of Man	San Diego Museum of Man	
RI-00026	NADB-R - 1080025; Voided - MF-0032	1971	Margie Akin	A Survey of the Archaeological Resources of the Santa Ana and San Jacinto River Basins	Department of Anthropology, U.C. Riverside	
RI-00535	NADB-R - 1080574; Voided - MF-0466	1979	Lowell John Bean., Sylvia Brakke Vane, Matthew C. Hall, Harry Lawton, Richard Logan, Lee Gooding Massey, John Oxendine, Charles Rozaire, and David P. Whistler	Cultural Resources and the Devers-Mira 500 kV Transmission Line Route (Valley to Mira Loma Section)	Cultural Systems Research, Incorporated, Menlo Park, CA	33-000114, 33-000630, 33-000714, 33-000807, 33-000984, 33-001078, 33-001241, 33-001442, 33-001448, 33-001449, 33-001450, 33-001649, 33-001651, 33-001652, 33-001653, 33-001654, 33-001656
RI-00809	NADB-R - 1080861; Voided - MF-0730	1980	Larry L. Bowles and Jean A. Salpas	An Archaeological Assessment of Parcel 15033	Archaeological Consultants	33-001979
RI-01144	NADB-R - 1081254; Voided - MF-1091	1980	D.M Van Horn	Archaeological Survey Report: The 1500 Acre Woodcrest Agricultural Preserve Located Adjacent to March AFB, Riverside County, California	Archaeological Associates, Ltd., Costa Mesa, CA	33-001775, 33-001776, 33-001777, 33-001778, 33-001779, 33-001780, 33-001781, 33-001782, 33-001783, 33-001784, 33-001785, 33-001786, 33-001787, 33-001788, 33-001789, 33-001790, 33-001791, 33-001792, 33-001793, 33-001794, 33-001795
RI-01250	NADB-R - 1081412; Voided - MF-1245	1981	Jean A. Salpas	An Archaeological Assessment Of Parcel 17657	Archaeological Consultant, Riverside, CA	
RI-01298	NADB-R - 1081472; Voided - MF-1301	1981	Deborah Moore	Environmental Impact Evaluation: An Archaeological Assessment of TP 17791	Archaeological Research Unit, U.C.Riverside	
RI-01312	NADB-R - 1081485; Voided - MF-1313	1975	Clement W. Meighan	Historical Resources in Three Southern California Counties	Department of Archaeological Survey, U.C. Los Angeles	
RI-01649	NADB-R - 1081941; Voided - MF-1745	1983	LERCH, MICHAEL K.	CULTURAL RESOURCES ASSESSMENT OF THE SANTA ANA WATERSHED PROJECT AUTHORITY PROPOSED IMPORTED WATER CONVEYANCE SYSTEM, RIVERSIDE COUNTY, CALIFORNIA	SAN BERNARDINO COUNTY MUSEUM ASSOCIATION	33-000112, 33-000326, 33-001016, 33-002547, 33-002548, 33-002549, 33-002550, 33-002551, 33-002552, 33-002553, 33-002554, 33-002555, 33-002556, 33-002557, 33-002558, 33-002559, 33-002560, 33-002561, 33-002562, 33-002563, 33-002564, 33-002565, 33-002566, 33-002567, 33-002568, 33-002569, 33-002570
RI-01734	NADB-R - 1082072; Voided - MF-1871	1983	MCCARTHY, DANIEL F.	AN ARCHAEOLOGICAL ASSESSMENT OF TP 19630, WOODCREST AREA OF RIVERSIDE COUNTY, CALIFORNIA	ARCHAEOLOGICAL RESEARCH UNIT, U.C. RIVERSIDE	33-002724

Report List

Report No.	Other IDs	Year	Author(s)	Title	Affiliation	Resources
RI-01955	NADB-R - 1082349; Voided - MF-2124	1977	HELLER, ROD, TIM TETHEROW, and C. WHITE	AN OVERVIEW OF THE SUNDESERT NUCLEAR PROJECT TRANSMISSION SYSTEM CULTURAL RESOURCE INVESTIGATION	WIRTH ASSOCIATES	
RI-02050	NADB-R - 1082479; Other - DAC05-85- 0033; Voided - MF-2244	1985	PERAULT, GORDON	PRELIMINARY HISTORIC INVENTORY - MARCH AIR FORCE BASE, CALIFORNIA	FIELDS AND SILVERMAN ARCHITECTS	
RI-02163	NADB-R - 1082592; Voided - MF-2350	1987	DE MUNCK, VICTOR C.	AN ARCHAEOLOGICAL ASSESSMENT OF TENTATIVE PARCEL MAP NO. 21252 IN THE WOODCREST AREA OF RIVERSIDE COUNTY, CALIFORNIA	ARCHAEOLOGICAL AND ETHNOGRAPHIC FIELD ASSOCIATES	
RI-02449	NADB-R - 1082940; Voided - MF-2680	1989	PARR, ROBERT E.	AN ARCHAEOLOGICAL ASSESSMENT OF TT 23459 LOCATED NEAR WOODCREST IN WESTERN RIVERSIDE COUNTY, CALIFORNIA	ARCHAEOLOGICAL RESEARCH UNIT, U.C. RIVERSIDE	33-003502, 33-003503
RI-02453	NADB-R - 1082944; Voided - MF-2684	1989	PARR, ROBERT E.	AN ARCHAEOLOGICAL ASSESSMENT OF ASSESSOR'S PARCEL 314-040-006, LOCATED NEAR VAL VERDE IN WESTERN RIVERSIDE COUNTY, CALIFORNIA	ARCHAEOLOGICAL RESEARCH UNIT, U.C. RIVERSIDE	
RI-02645	NADB-R - 1083117; Voided - MF-2852	1990	DROVER, CHRISTOPHER E.	AN ARCHAEOLOGICAL ASSESSMENT OF THE LURIN ROOSEVELT AND HILLSIDE TANK SITES WESTERN MUNICIPAL WATER DISTRICT RIVERSIDE COUNTY, CALIFORNIA.	AUTHOR(S)	33-003859
RI-02810	NADB-R - 1083552; Voided - MF-3010	1990	DROVER, CHRISTOPHER E.	AN ARCHAEOLOGICAL ASSESSMENT OF PARCEL # 274-210-013 AND 266-070-002, WOODSIDE, RIVERSIDE COUNTY, CALIFORNIA.	AUTHOR	
RI-02811	NADB-R - 1083417; Voided - MF-3011	1990	DROVER, CHRISTOPHER E.	AN ARCHAEOLOGICAL ASSESSMENT OF TRACT NUMBER 25641 TEMECULA, RIVERSIDE COUNTY, CALIFORNIA	AUTHOR	
RI-02854	NADB-R - 1083457; Voided - MF-3051	1990	BROWN, JOAN C.	CULTURAL RESOURCES RECONNAISSANCE OF TENTATIVE PARCEL 25913, THREE ACRES IN RIVERSIDE COUNTY, CALIFORNIA	RMW PALEO	

Report List

Report No.	Other IDs	Year	Author(s)	Title	Affiliation	Resources
RI-03190	NADB-R - 1083752; Other - 89-90; Voided - MF-3408	1990	PEAK AND ASSOCIATES	PART III, ADDENDUM TO: CULTURAL RESOURCES ASSESSMENT OF AT&T'S PROPOSED SAN BERNARDINO TO SAN DIEGO FIBER OPTIC CABLE, SAN BERNARDINO, RIVERSIDE, AND SAN DIEGO COUNTIES, CALIFORNIA	PEAK AND ASSOCIATES	33-000805, 33-001017, 33-001057, 33-001183, 33-002013, 33-002696, 33-002701, 33-002711, 33-002725
RI-03465	NADB-R - 1084142; Voided - MF-3724	1992	DROVER, CHRISTOPHER	A CULTURAL RESOURCES ASSESSMENT OF THE 800-ACRE ALTA CRESTA RANCH SPECIFIC PLAN, RIVERSIDE EAST - STEELE PEAK USGS QUADS, WOODCREST CA	AUTHOR	
RI-03485	NADB-R - 1084155; Voided - MF-3742	1992	WHITE, ROBERT S.	AN ARCHAEOLOGICAL ASSESSMENT OF A 9.06-ACRE PARCEL LOCATED AT 19485 DALLAS AVE	ARCHAEOLOGICAL ASSOCIATES, LTD.	33-004710
RI-03490	NADB-R - 1084161; Voided - MF-3748	1991	MCINTOSH, BEVERLY CHILDS	The Juan Bautista De Anza Trail Past, Present and Future, Baja to Riverside, California	n/a	
RI-03604	NADB-R - 1084327; Voided - MF-3878	1992	Carleton S. Jones	The Development of Cultural Complexity Among the Luiseno: A Thesis Presented to the Department of Anthropology, California State University, Long Beach in Partial Fulfillment of the Requirements for the Degree, Master of Arts	California State University, Long Beach	
RI-03827	NADB-R - 1084679; Voided - MF-4172	1990	DROVER, CHRISTOPHER	ENVIRONMENTAL IMPACT EVALUATION: AN ARCHAEOLOGICAL ASSESSMENT OF TRACT NUMBER 25641, TEMECULA, RIVERSIDE COUNTY, CALIFORNIA	AUTHOR	
RI-04404	NADB-R - 1085736; Voided - MF-4913	2000	JONES AND STOKES ASSOCIATES, INC.	FINAL CULTURAL RESOURCES INVENTORY REPORT FOR THE WILLIAMS COMMUNICATIONS, INC., FIBER OPTIC CABLE SYSTEM INSTALLATION PROJECT, RIVERSIDE TO SAN DIEGO, CALIFORNIA VOL I-IV.	JONES AND STOKES ASSOCIATES, INC.	33-000816, 33-000817, 33-000862, 33-001845, 33-002970, 33-003081, 33-003839, 33-004202, 33-004624, 33-004744, 33-004768, 33-007587, 33-007601, 33-008105, 33-008172, 33-009772, 33-009773, 33-009774, 33-009775, 33-009776
RI-04690	NADB-R - 1086052; Submitter - 6382-109	2002	MAXON, PATRICK	RESULTS OF A PRE-DEVELOPMENT CULTURAL RESOURCES INVENTORY AND BIOLOGICAL SURVEY/CONSTRAINTS ANALYSIS FOR THE 2.2 ACRE LINCOLN SELF STORAGE PROPERTY, CITY OF RIVERSIDE, RIVERSIDE COUNTY, CALIFORNIA	SWCA ENVIRONMENTAL CONSULTANTS	

Report List

Report No.	Other IDs	Year	Author(s)	Title	Affiliation	Resources
RI-04762	NADB-R - 1083854; Voided - MF-3495	1990	BARKER, LEO R. and ANN E. HUSTON, EDITORS	DEATH VALLEY TO DEADWOOD; KENNECOTT TO CRIPPLE CREEK. PROCEEDINGS OF THE HISTORIC MINING CONFERENCE, JANUARY 23-27, 1989, DEATH VALLEY NATIONAL MONUMENT	Division of National Register Programs National Park Service	
RI-04813	NADB-R - 1086175; Other - 118, 119, 120, 121, 122, 123	1993	NATIONAL PARK SERVICE, HAER	CALIFORNIA CITRUS HERITAGE RECORDING PROJECT: PHOTOGRAPHS, WRITTEN HISTORICAL AND DESCRIPTIVE DATA, REDUCED COPIES OF MEASURED DRAWINGS FOR: ARLINGTON HEIGHT CITRUS LANDSCAPE, GAGE IRRIGATION CANAL, NATIONAL ORANGE COMPANY PACKING HOUSE, VICTORIA BRIDGE, AND UNION PACIFIC RAILROAD BRIDGE	NATIONAL PARK SERVICE, HISTORIC AMERICAN ENGINEERING RECORD	33-003361, 33-004768, 33-009772
RI-05088	NADB-R - 1086450	2005	CULTURAL SYSTEMS RESEARCH, INC.	ETHNOGRAPHIC OVERVIEW INLAND FEEDER PIPELINE PROJECT	CULTURAL SYSTEMS RESEARCH, INC.	33-001162, 33-004624, 33-004627, 33-004628, 33-004930
RI-05169	NADB-R - 1086532	2004	MASON, ROGER D.	PHASE I ARCHAEOLOGICAL SURVEY REPORT FOR THE CHEN TA PROJECT RIVERSIDE COUNTY, CALIFORNIA	ECORP CONSULTING, INC.	
RI-05179	NADB-R - 1086542; Submitter - BEH333	2003	LSA ASSOCIATES, INC.	CULTURAL RESOURCE ASSESSMENT, BEAZER HOMES TRACT 30756, RIVERSIDE COUNTY, CALIFORNIA	LSA ASSOCIATES, INC.	
RI-05180	NADB-R - 1086543	2005	MASON, ROBERT	PHASE I CULTURAL ARCHAEOLOGICAL SURVEY REPORT FOR THE CHEN TA NORTH PROJECT, RIVESIDE COUNTY, CALIFORNIA	ECORP CONSULTING, INC.	
RI-05377	NADB-R - 1086740	2001	LOVE, BRUCE and MARIAM DAHDUL	ARCHAEOLOGICAL TESTING AT SITES CA- RIV-4739, -4740, -4741, AND -4743	CRM TECH	33-004739, 33-004740, 33-004741, 33-004743
RI-05458	NADB-R - 1086821	2005	MASON, ROGER D.	PHASE I ARCHAEOLOGICAL SURVEY REPORT FOR THE SAWADA PARCEL (APN 266-160-006), RIVERSIDE COUNTY, CA	ECORP CONSULTING, INC.	
RI-05460	NADB-R - 1086823	2005	MASON, ROGER D.	PHASE I ARCHAEOLOGICAL SURVEY REPORT FOR THE CHEN PARCELS (APN 266-140-021, -022, -002) RIVERSIDE COUNTY, CA	ECORP CONSULTING, INC	
RI-05470	NADB-R - 1086833	2005	BRUNZELL, DAVID and DANIEL EWERS	CULTURAL RESOURCES ASSESSMENT, PARSONS ROAD PROJECT, TENTATIVE TRACT MAP NO. 32530, RIVERSIDE COUNTY, CA	LSA ASSOCIATES, INC.	

Report List

Report No.	Other IDs	Year	Author(s)	Title	Affiliation	Resources
RI-05926	NADB-R - 1087289; Submitter - 848	2002	LOVE, BRUCE, BAI TANG, DANIEL BALLESTER, and MARIAM DAHDUL	HISTORICAL/ARCHAEOLOGICAL RESOURCES SURVEY REPORT, CAJALCO SUB-AREA SEWER FACILITIES IMPROVEMENT PROJECT, NEAR THE CITIES OF RIVERSIDE AND PERRIS, RIVERSIDE COUNTY, CA	CRM TECH	33-005394, 33-009775
RI-05994	NADB-R - 1087357; Submitter - 1056	2003	DAHDUL, MARIAM, DANIEL BALLESTER, and JOSH SMALLWOOD	ARCHAEOLOGICAL TESTING AT SITES CA- RIV-4736/H. ALTA CRESTA SPECIFIC PLAN, TENTATIVE TRACT MAP NO.S 31237, 31238, 31360 TO 31362, NEAR THE CITY OF RIVERSIDE, RIVERSIDE COUNTY	CRM TECH	33-004736, 33-004737
RI-06268	NADB-R - 1087631	2006	BHOLAT, SARA and EVELYN CHANDLER	CULTURAL RESOURCES INVESTIGATION OF THE 5.4-ACRE PROPERTY LOCATED SOUTH OF VAN BUREN BOULEVARD, CITY AND COUNTY OF RIVERSIDE, CALIFORNIA	ECORP CONSULTING, INC.	33-004732, 33-015334, 33-015335, 33-015336
RI-06426	NADB-R - 1087789; Submitter - CRM TECH CONTRACT #1448	2004	HOGAN, MICHAEL, BAI TANG, MATTHEW WETHERBEE, and JOHN EDDY	HISTORICAL/ARCHAEOLOGICAL RESOURCES REPORT, TENTATIVE TRACT MAP NUMBERS 32301 AND 32302, WOODCREST AREA, RIVERSIDE COUNTY, CALIFORNIA	CRM TECH	33-013836
RI-06951		2007	Ahmet, Koral and Cary Cotterman	Cultural Resources Evaluation of Prehistoric and, Historic-Period Resources on a 5.4 Acre Property, Located South of Van Buren Boulevard, City and County of Riverside, California.	ECORP Consulting, Inc.	33-004732, 33-015334, 33-015335, 33-015336
RI-07356	Submitter - 2017107700	2007	Mattiusi, Sarah	Phase I Archaeological Assessment for the Roosevelt Heights Development LLC Project: County of Riverside, California	Stantec Consulting	33-016611
RI-07547		2006	Collins, Nora and Brian F. Smith	An Archaeological Survey for the Mission Ranch/Gamble Lift Station Project	Brian F. Smith and Associates	
RI-07909		2004	Pierson, Larry J.	A Cultural Resources Survey of the Cochran Lot Split Project, County of Riverside, California, TPM #31916	Brian F. Smith and Associates	
RI-08149		2008	Wayne Bonner and Marnie Aislin-Kay	Letter Report: Cultural Resource Records Search for T-Mobile USA Facility Candidate	Michael Brandman Associates, Irvine, California	
RI-08592	Other - IE24895-B; Submitter - IE24895- B	2010	Wayne H. Bonner	Letter Report: Cultural Records Search and Site Visit Results for T-Mobile USA Telecommunications candidate IE24895-B (Mt. Moriah), 17011 Wood Road, Riverside, Riverside County, California	Michael Brandman Associates	

Report List

Report No.	Other IDs	Year	Author(s)	Title	Affiliation	Resources
RI-08740	Submitter - CRM Tech Contract No. 2619	2013	Bai Tom Tang, Michael Hogan, Terri Jacquemain, and Daniel Ballester	Historical/Archaeological Resources Survey Report Assesor's Parcel Nos. 274-120-012, - 017, -030, and 274-140-036	CRM Tech	
RI-09489		2014	Kristina Lindgren and Roger D. Mason	Cultural Resources Survey of a 1.44-Acre Property Located in the City and County of Riverside, California	ECORP Consulting, Inc.	
RI-09577		2006	Tom Mull	Delineation of Jurisdictional Waters Jose Gonzales Family Residence Assessor's Parcel Number 267-090-004 Woodcrest Area, Riverside County, California	LSA Associates, Inc.	
RI-10548	Other - TR37594	2018	Andrew J. Garrison and Brian F. Smith	A Phase I Cultural Resources Assessment for TR37594, Riverside County, California	Brian F. Smith and Associates, Inc.	
RI-10691		1979	Alan Curl	Phase I Survey of the City of Riverside Final Report	Riverside Munciple Museum	

APPENDIX B

NATIVE AMERICAN SCOPING

NATIVE AMERICAN NOTIFICATION RECORD

Native American Notification for the Proposed Lurin Land Development Obsidian Project in the City of Riverside

Date LSA Requested Sacred Lands File Search: January 14, 2020

Date Native American Heritage Commission Replied: January 21, 2020

Results of Sacred Lands File Search: failed to indicate presence of Native American cultural resources within the project but recommended LSA contact the groups/individuals listed below.

Date designated groups/individuals were notified: July 21, 2020

Groups Contacted	Date LSA e-mailed Tribes	Date of follow-up email	Date and Results of Responses
Agua Caliente Band of Cahuilla Indians Jeff Grubbe, Chairperson Cahuilla	January 21, 2020	February 7, 2020	
Agua Caliente Band of Cahuilla Indians Patricia Garcia-Plotkin, Director Cahuilla	January 21, 2020	February 7, 2020	
Augustine Band of Cahuilla Mission Indians Amanda Vance, Chairperson Cahuilla	January 21, 2020	February 7, 2020	
Cabazon Band of Mission Indians Doug Welmas, Chairperson Cahuilla	January 21, 2020	February 7, 2020	2/10/2020: Ms. Judy Stapp (Direct of cultural Affairs) indicated the project is located outside of the Tribe's current reservation boundaries but within an area that may be considered a traditional use area. The Tribe, however, has no specific archival information on the site indicating that it may be a sacred/religious site or other site of Native American traditional cultural value.
Cahuilla Band of Indians Daniel Salgado, Chairperson Cahuilla	January 21, 2020		2/12/2020: Mr. Bobby Ray Esparza (Cultural Coordinator) indicated that although this project is outside the Cahuilla reservation boundary, it is within the Cahuilla traditional land use area. We believe that cultural resources may be unearthed during construction. We request that a tribal monitor from the Cahuilla band be present during all ground disturbing activities and to be notified of all updates with the project moving forward.
Gabrieleno Band of Mission Indians - Kizh Nation Andrew Salas, Chairperson Gabrieleno	January 21, 2020	February 7, 2020	
Gabrieleno/Tongva San Gabriel Band of Mission Indians Anthony Morales, Chairperson Gabrieleno	January 21, 2020	February 7, 2020	

Groups Contacted	Date LSA e-mailed Tribes	Date of follow-up email	Date and Results of Responses
Gabrielino/Tongva Nation Sandonne Goad, Chairperson Gabrielino	January 21, 2020	February 7, 2020	
Gabrielino Tongva Indians of California Tribal Council Robert Dorame, Chairperson Gabrielino	January 21, 2020	February 7, 2020	
Gabrielino-Tongva Tribe Charles Alvarez Gabrielino	January 21, 2020	February 7, 2020	
La Jolla Band of Luiseno Indians Fred Nelson, Chairperson Luiseno	January 22, 2020	February 7, 2020	
Los Coyotes Band of Mission Indians Shane Chapparosa, Chairperson Cahuilla	January 21, 2020	February 7, 2020	
Los Coyotes Band of Mission Indians Jacob Norte, Environmental Director Cahuilla	January 21, 2020	February 7, 2020	
Morongo Band of Mission Indians Denisa Torres, Cultural Resources Manager Cahuilla Serrano	January 21, 2020		2/6/2020: Travis Armstrong (THPO) responded indicating the project is within the ancestral territory and traditional use area of the Cahuilla and Serrano people of the Morongo Band of Mission Indians and requested initiation of government-to-government consultation, the results of a records search conducted at the appropriate California Historical Resources Information System (CHRIS) center with at least a 1.0-mile search radius (including copies of the reports and site records, Tribal participation during survey and testing and a copy of the Phase I study or other cultural assessments as soon as available.
Morongo Band of Mission Indians Robert Martin, Chairperson Cahuilla Serrano	January 21, 2020		(Please see Mr. Armstrong's response above)
Pala Band of Mission Indians Shasta Gaughen, THPO Cupeno Luiseno	January 21, 2020	February 7, 2020	
Pauma Band of Luiseno Indians Temet Aguilar, Chairperson Luiseno	January 21, 2020	February 7, 2020	

Groups Contacted	Date LSA e-mailed Tribes	Date of follow-up email	Date and Results of Responses
Pechanga Band of Mission Indians Ebru T. Ozdil Cultural Analyst Luiseno	January 21, 2020		<p>2/3/2020: Molly Earp-Escobar (Cultural Planning Specialist) responded Project area is within ancestral territory and the Tribe is highly interested in participating in this Project which is located within a Traditional Cultural Property (TCP), with recorded sites directly surrounding it. The Tribe understands that the Project area was previously used as an orchard, however, the Tribe has seen in several occasions that Tribal resources were unearthed and trapped within the root systems of the Trees. Therefore, given the nature of the recorded sites surrounding the Proposed Project area and the TCP, the scope of work will likely impact Tribal resources. At this time, the Tribe requests the following:</p> <p>1) Notification once the Project begins the entitlement process, if it has not already;</p> <p>2) Copies of all applicable archaeological reports, site records, proposed grading plans and environmental documents (EA/IS/MND/EIR, etc.);</p> <p>3) Government-to-government consultation with the Lead Agency; and</p> <p>4) The Tribe believes that monitoring by a Riverside County qualified archaeologist and a professional Pechanga Tribe monitor may be required during earthmoving activities. Therefore, the Tribe reserves its right to make additional comments and recommendations once the environmental documents have been received and fully reviewed. Further, in the event that subsurface cultural resources are identified, the Tribe requests consultation with the Project proponent and Lead Agency regarding the treatment and disposition of all artifacts.</p> <p>The Tribe reserves its rights to participate in the formal environmental review process, including government-to-government consultation with the Lead Agency, and requests to be included in all correspondence regarding this Project. Please note that we are interested in participating in surveys within Luiseno ancestral territory.</p>
Pechanga Band of Mission Indians Paul Macarro, Cultural Resources Coordinator Luiseno	January 21, 2020		(See response from Ms. Earp-Escobar above)
Ramona Band of Cahuilla Mission Indians John Gomez, Environmental Coordinator Cahuilla	January 21, 2020	February 7, 2020	
Ramona Band of Cahuilla Mission Indians Joseph Hamilton, Chairperson Cahuilla	January 21, 2020	February 7, 2020	

Groups Contacted	Date LSA e-mailed Tribes	Date of follow-up email	Date and Results of Responses
Rincon Band of Luiseno Indians Cheryl Madrigal, THPO Luiseno	January 21, 2020		1/24/2020: Ms. Madrigal responded indicating the project is “within the Territory of the Luiseño people, and is also within Rincon’s specific area of Historic interest. The Tribe has no knowledge of cultural resources within or near the project area. A cultural resources record search is recommended and access to the results is requested, along with consultation with affiliated Tribes, including possible development of mitigation measures and a treatment and monitoring agreement.
Rincon Band of Luiseno Indians Bo Mazzetti, Chairperson Luiseno	January 21, 2020		(See response from Ms. Madrigal above)
San Fernando Band of Mission Indians Donna Yocum, Chairperson Kitanemuk, Vanyume, Tataviam	January 21, 2020		1/22/2020: Ms. Yocum responded, deferring to San Manuel
San Luis Rey Band of Mission Indians San Luis Rey, Tribal Council Luiseno	January 21, 2020	February 7, 2020	
San Manuel Band of Mission Indians Lee Clauss, Director of Cultural Resources Serrano	January 21, 2020		1/22/2020: Ms. Alexandra McCleary (Tribal Archaeologist) responded that the project is “located outside of Serrano ancestral territory and, as such, SMBMI will not be requesting consulting party status with the lead agency or requesting to participate in the scoping, development, and/or review of documents created pursuant to legal and regulatory mandates.”
Santa Rosa Band of Cahuilla Indians Mercedes Estrada, Cahuilla	January 21, 2020	February 7, 2020	
Santa Rosa Band of Mission Indians Steven Estrada, Chairperson Cahuilla	January 21, 2020	February 7, 2020	
Serrano Nation of Mission Indians Mark Cochrane, Co-Chairperson Serrano	January 21, 2020	February 7, 2020	
Serrano Nation of Mission Indians Wayne Walker, Co-Chairperson Serrano	January 21, 2020	February 7, 2020	
Soboba Band of Luiseno Indians Scott Cozart, Chairperson	January 21, 2020	February 7, 2020	

Groups Contacted	Date LSA e-mailed Tribes	Date of follow-up email	Date and Results of Responses
Cahuilla Luiseno			
Soboba Band of Luiseno Indians Joseph Ontiveros, Cultural Resource Department Cahuilla Luiseno	January 21, 2020	February 7, 2020	
Torres-Martinez Desert Cahuilla Indians Michael Mirelez, Cultural Resource Coordinator Cahuilla	January 21, 2020	February 7, 2020	



NATIVE AMERICAN HERITAGE COMMISSION

January 21, 2020

Rory Goodwin
LSA

Via Email to: rory.goodwin@lsa.net

CHAIRPERSON
Laura Miranda
Luiseño

VICE CHAIRPERSON
Reginald Pagaling
Chumash

SECRETARY
Merri Lopez-Keifer
Luiseño

PARLIAMENTARIAN
Russell Attebery
Karuk

COMMISSIONER
Marshall McKay
Wintun

COMMISSIONER
William Mungary
Paiute/White Mountain
Apache

COMMISSIONER
Joseph Myers
Pomo

COMMISSIONER
Julie Tumamait-Stenslie
Chumash

COMMISSIONER
[Vacant]

EXECUTIVE SECRETARY
Christina Snider
Pomo

NAHC HEADQUARTERS
1550 Harbor Boulevard
Suite 100
West Sacramento,
California 95691
(916) 373-3710
nahc@nahc.ca.gov
NAHC.ca.gov

Re: Lurin Land Development Obsidian Tract Project, Riverside County

Dear Mr. Goodwin:

A record search of the Native American Heritage Commission (NAHC) Sacred Lands File (SLF) was completed for the information you have submitted for the above referenced project. The results were negative. However, the absence of specific site information in the SLF does not indicate the absence of cultural resources in any project area. Other sources of cultural resources should also be contacted for information regarding known and recorded sites.

Attached is a list of Native American tribes who may also have knowledge of cultural resources in the project area. This list should provide a starting place in locating areas of potential adverse impact within the proposed project area. I suggest you contact all of those indicated; if they cannot supply information, they might recommend others with specific knowledge. By contacting all those listed, your organization will be better able to respond to claims of failure to consult with the appropriate tribe. If a response has not been received within two weeks of notification, the Commission requests that you follow-up with a telephone call or email to ensure that the project information has been received.

If you receive notification of change of addresses and phone numbers from tribes, please notify me. With your assistance, we can assure that our lists contain current information.

If you have any questions or need additional information, please contact me at my email address: Andrew.Green@nahc.ca.gov.

Sincerely,

Andrew Green
Staff Services Analyst

Attachment

**Native American Heritage Commission
Native American Contact List
Riverside County
1/21/2020**

Agua Caliente Band of Cahuilla Indians

Jeff Grubbe, Chairperson
5401 Dinah Shore Drive
Palm Springs, CA, 92264
Phone: (760) 699 - 6800
Fax: (760) 699-6919

Cahuilla

Gabrieleno/Tongva San Gabriel Band of Mission Indians

Anthony Morales, Chairperson
P.O. Box 693
San Gabriel, CA, 91778
Phone: (626) 483 - 3564
Fax: (626) 286-1262
GTTribalcouncil@aol.com

Gabrieleno

Agua Caliente Band of Cahuilla Indians

Patricia Garcia-Plotkin, Director
5401 Dinah Shore Drive
Palm Springs, CA, 92264
Phone: (760) 699 - 6907
Fax: (760) 699-6924
ACBCI-THPO@aguacaliente.net

Cahuilla

Gabrielino /Tongva Nation

Sandonne Goad, Chairperson
106 1/2 Judge John Aiso St.,
#231
Los Angeles, CA, 90012
Phone: (951) 807 - 0479
sgoad@gabrielino-tongva.com

Gabrielino

Augustine Band of Cahuilla Mission Indians

Amanda Vance, Chairperson
P.O. Box 846
Coachella, CA, 92236
Phone: (760) 398 - 4722
Fax: (760) 369-7161
hhaines@augustinetribe.com

Cahuilla

Gabrielino Tongva Indians of California Tribal Council

Robert Dorame, Chairperson
P.O. Box 490
Bellflower, CA, 90707
Phone: (562) 761 - 6417
Fax: (562) 761-6417
gtongva@gmail.com

Gabrielino

Cabazon Band of Mission Indians

Doug Welmas, Chairperson
84-245 Indio Springs Parkway
Indio, CA, 92203
Phone: (760) 342 - 2593
Fax: (760) 347-7880
jstapp@cabazonindians-nsn.gov

Cahuilla

Gabrielino-Tongva Tribe

Charles Alvarez,
23454 Vanowen Street
West Hills, CA, 91307
Phone: (310) 403 - 6048
roadkingcharles@aol.com

Gabrielino

Cahuilla Band of Indians

Daniel Salgado, Chairperson
52701 U.S. Highway 371
Anza, CA, 92539
Phone: (951) 763 - 5549
Fax: (951) 763-2808
Chairman@cahuilla.net

Cahuilla

La Jolla Band of Luiseno Indians

Fred Nelson, Chairperson
22000 Highway 76
Pauma Valley, CA, 92061
Phone: (760) 742 - 3771

Luiseno

Gabrieleno Band of Mission Indians - Kizh Nation

Andrew Salas, Chairperson
P.O. Box 393
Covina, CA, 91723
Phone: (626) 926 - 4131
admin@gabrielenoindians.org

Gabrieleno

Los Coyotes Band of Cahuilla and Cupeño Indians

Shane Chapparosa, Chairperson
P.O. Box 189
Warner Springs, CA, 92086-0189
Phone: (760) 782 - 0711
Fax: (760) 782-0712

Cahuilla

This list is current only as of the date of this document. Distribution of this list does not relieve any person of statutory responsibility as defined in Section 7050.5 of the Health and Safety Code, Section 5097.94 of the Public Resource Section 5097.98 of the Public Resources Code.

This list is only applicable for contacting local Native Americans with regard to cultural resources assessment for the proposed Lurin Land Development Obsidian Tract Project, Riverside County.

**Native American Heritage Commission
Native American Contact List
Riverside County
1/21/2020**

Morongo Band of Mission Indians

Denisa Torres, Cultural Resources
Manager
12700 Pumarra Rroad Cahuilla
Banning, CA, 92220 Serrano
Phone: (951) 849 - 8807
Fax: (951) 922-8146
dtorres@morongo-nsn.gov

Pechanga Band of Luiseno Indians

Paul Macarro, Cultural Resources
Coordinator
P.O. Box 1477 Luiseno
Temecula, CA, 92593
Phone: (951) 770 - 6306
Fax: (951) 506-9491
pmacarro@pechanga-nsn.gov

Morongo Band of Mission Indians

Robert Martin, Chairperson
12700 Pumarra Rroad Cahuilla
Banning, CA, 92220 Serrano
Phone: (951) 849 - 8807
Fax: (951) 922-8146
dtorres@morongo-nsn.gov

Ramona Band of Cahuilla

John Gomez, Environmental
Coordinator
P. O. Box 391670 Cahuilla
Anza, CA, 92539
Phone: (951) 763 - 4105
Fax: (951) 763-4325
jgomez@ramona-nsn.gov

Pala Band of Mission Indians

Shasta Gaughen, Tribal Historic
Preservation Officer
PMB 50, 35008 Pala Temecula Cupeno
Rd. Luiseno
Pala, CA, 92059
Phone: (760) 891 - 3515
Fax: (760) 742-3189
sgaughen@palatribe.com

Ramona Band of Cahuilla

Joseph Hamilton, Chairperson
P.O. Box 391670 Cahuilla
Anza, CA, 92539
Phone: (951) 763 - 4105
Fax: (951) 763-4325
admin@ramona-nsn.gov

Pauma Band of Luiseno Indians

Temet Aguilar, Chairperson
P.O. Box 369 Luiseno
Pauma Valley, CA, 92061
Phone: (760) 742 - 1289
Fax: (760) 742-3422
bennaecalac@aol.com

Rincon Band of Luiseno Indians

Cheryl Madrigal, Tribal Historic
Preservation Officer
One Government Center Lane Luiseno
Valley Center, CA, 92082
Phone: (760) 297 - 2635
crd@rincon-nsn.gov

Pechanga Band of Luiseno Indians

Mark Macarro, Chairperson
P.O. Box 1477 Luiseno
Temecula, CA, 92593
Phone: (951) 770 - 6000
Fax: (951) 695-1778
epreston@pechanga-nsn.gov

Rincon Band of Luiseno Indians

Bo Mazzetti, Chairperson
One Government Center Lane Luiseno
Valley Center, CA, 92082
Phone: (760) 749 - 1051
Fax: (760) 749-5144
bomazzetti@aol.com

San Fernando Band of Mission Indians

Donna Yocum, Chairperson
P.O. Box 221838 Kitanemuk
Newhall, CA, 91322 Vanyume
Phone: (503) 539 - 0933 Tataviam
Fax: (503) 574-3308
ddyocum@comcast.net

This list is current only as of the date of this document. Distribution of this list does not relieve any person of statutory responsibility as defined in Section 7050.5 of the Health and Safety Code, Section 5097.94 of the Public Resource Section 5097.98 of the Public Resources Code.

This list is only applicable for contacting local Native Americans with regard to cultural resources assessment for the proposed Lurin Land Development Obsidian Tract Project, Riverside County.

**Native American Heritage Commission
Native American Contact List
Riverside County
1/21/2020**

San Luis Rey Band of Mission Indians

1889 Sunset Drive Luiseno
Vista, CA, 92081
Phone: (760) 724 - 8505
Fax: (760) 724-2172
cjmojado@slrmissionindians.org

San Luis Rey Band of Mission Indians

San Luis Rey, Tribal Council
1889 Sunset Drive Luiseno
Vista, CA, 92081
Phone: (760) 724 - 8505
Fax: (760) 724-2172
cjmojado@slrmissionindians.org

San Manuel Band of Mission Indians

Lee Clauss, Director of Cultural Resources
26569 Community Center Drive Serrano
Highland, CA, 92346
Phone: (909) 864 - 8933
Fax: (909) 864-3370
lclauss@sanmanuel-nsn.gov

Santa Rosa Band of Cahuilla Indians

Steven Estrada, Chairperson
P.O. Box 391820 Cahuilla
Anza, CA, 92539
Phone: (951) 659 - 2700
Fax: (951) 659-2228
mflaxbeard@santarosacahuilla-nsn.gov

Santa Rosa Band of Cahuilla Indians

Mercedes Estrada,
P. O. Box 391820 Cahuilla
Anza, CA, 92539
Phone: (951) 659 - 2700
Fax: (951) 659-2228
mercedes.estrada@santarosacahuilla-nsn.gov

Serrano Nation of Mission Indians

Mark Cochrane, Co-Chairperson
P. O. Box 343 Serrano
Patton, CA, 92369
Phone: (909) 528 - 9032
serranonation1@gmail.com

Serrano Nation of Mission Indians

Wayne Walker, Co-Chairperson
P. O. Box 343 Serrano
Patton, CA, 92369
Phone: (253) 370 - 0167
serranonation1@gmail.com

Soboba Band of Luiseno Indians

Joseph Ontiveros, Cultural Resource Department
P.O. BOX 487 Cahuilla
San Jacinto, CA, 92581 Luiseno
Phone: (951) 663 - 5279
Fax: (951) 654-4198
jontiveros@soboba-nsn.gov

Soboba Band of Luiseno Indians

Scott Cozart, Chairperson
P. O. Box 487 Cahuilla
San Jacinto, CA, 92583 Luiseno
Phone: (951) 654 - 2765
Fax: (951) 654-4198
jontiveros@soboba-nsn.gov

Torres-Martinez Desert Cahuilla Indians

Michael Mirelez, Cultural Resource Coordinator
P.O. Box 1160 Cahuilla
Thermal, CA, 92274
Phone: (760) 399 - 0022
Fax: (760) 397-8146
mmirelez@tmdci.org

This list is current only as of the date of this document. Distribution of this list does not relieve any person of statutory responsibility as defined in Section 7050.5 of the Health and Safety Code, Section 5097.94 of the Public Resource Section 5097.98 of the Public Resources Code.

This list is only applicable for contacting local Native Americans with regard to cultural resources assessment for the proposed Lurin Land Development Obsidian Tract Project, Riverside County.

From: [Rory Goodwin](#)
To: ["ACBCI-THPO@aguacaliente.net"](mailto:ACBCI-THPO@aguacaliente.net)
Cc: [Padilla, Lacy \(TRBL\)](#)
Subject: FW: Native American Scoping for the Lurin Land Development Obsidian Tract Project in Riverside (DFD2001)
Date: Tuesday, January 21, 2020 3:15:00 PM
Attachments: [Fig1_ProjectLocation_Obsidian.pdf](#)

January 21, 2020

Agua Caliente Band of Cahuilla Indians
Patricia Garcia-Plotkin, Director
5401 Dinah Shore Drive
Palm Springs, CA, 92264

Subject: Native American Scoping for the Lurin Land Development Obsidian Tract Project
(LSA Project No. DFD2001)

Dear Ms. Garcia-Plotkin:

At the direction of the City of Riverside, LSA is conducting scoping notification for the Lurin Land Development Obsidian Tract Project. The project area includes 5.58 acres in Section 30 of Township 3 South, Range 4 West (*Riverside East* and *Steele Peak, California* quadrangles; see attached Figure 1). There will be ground disturbance associated with the project.

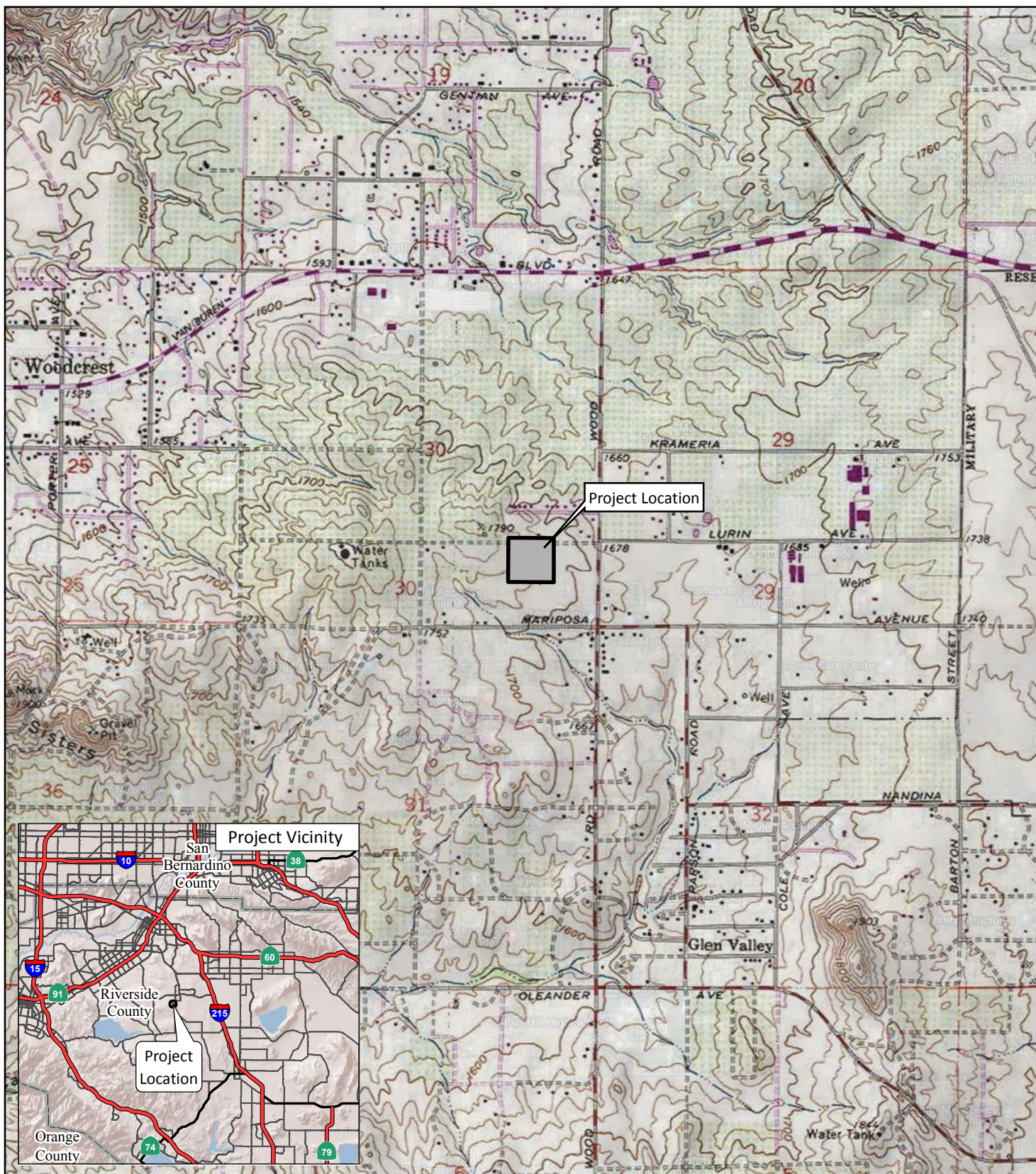
The results of the Sacred Lands File search conducted by the Native American Heritage Commission for this project were negative. Please let us know if you have any comments.

Sincerely,

LSA ASSOCIATES, INC.

Riordan Goodwin
Archaeologist/Senior Cultural Resources Manager

Attachment: Figure 1 (Project Location)



LSA

LEGEND

 Project Location



0 1000 2000
FEET

FIGURE 1

Obsidian Development
Regional and Project Location

SOURCE: USGS 7.5' Quad - Riverside East (1980); Steele Peak (1978), CA

I:\DFD2001\GIS\MXD\ProjectLocation_Obsidian.mxd (1/14/2020)

From: [Rory Goodwin](#)
To: ["ACBCI-THPO@aguacaliente.net"](mailto:ACBCI-THPO@aguacaliente.net)
Cc: [Padilla, Lacy \(TRBL\)](#)
Subject: FW: Native American Scoping for the Lurin Land Development Obsidian Tract Project in Riverside (DFD2001)
Date: Friday, February 7, 2020 3:29:00 PM
Attachments: [Fig1_ProjectLocation_Obsidian.pdf](#)

Dear Ms. Garcia-Plotkin:

This is a follow-up to the previous notification regarding this project. Please let us know if you have any comments.

Sincerely,

LSA ASSOCIATES, INC.

Riordan Goodwin

Archaeologist/Senior Cultural Resources Manager

From: Rory Goodwin
Sent: Tuesday, January 21, 2020 3:16 PM
To: 'ACBCI-THPO@aguacaliente.net' <ACBCI-THPO@aguacaliente.net>
Cc: Padilla, Lacy (TRBL) <lpadilla@aguacaliente.net>
Subject: FW: Native American Scoping for the Lurin Land Development Obsidian Tract Project in Riverside (DFD2001)

January 21, 2020

Agua Caliente Band of Cahuilla Indians
Patricia Garcia-Plotkin, Director
5401 Dinah Shore Drive
Palm Springs, CA, 92264

Subject: Native American Scoping for the Lurin Land Development Obsidian Tract Project (LSA Project No. DFD2001)

Dear Ms. Garcia-Plotkin:

At the direction of the City of Riverside, LSA is conducting scoping notification for the Lurin Land Development Obsidian Tract Project. The project area includes 5.58 acres in Section 30 of Township 3 South, Range 4 West (*Riverside East* and *Steele Peak, California* quadrangles; see attached Figure 1). There will be ground disturbance associated with the project.

The results of the Sacred Lands File search conducted by the Native American Heritage

Commission for this project were negative. Please let us know if you have any comments.

Sincerely,

LSA ASSOCIATES, INC.

Riordan Goodwin

Archaeologist/Senior Cultural Resources Manager

Attachment: Figure 1 (Project Location)

Rory Goodwin

From: donna <ddyocum@comcast.net>
Sent: Wednesday, January 22, 2020 6:48 AM
To: Rory Goodwin
Subject: RE: Native American Scoping for the Lurin Land Development ObsidianTract Project in Riverside (DFD2001)

Mr. Goodwin,

Thank you for the information regarding - Lurin Land Development ObsidianTract Project in Riverside (DFD2001). The San Fernando Band of Mission Indians will defer the referenced project to San Manuel Tribe.

Regards,
Donna Yocum, Chairwoman
SFBMI

Sent from [Mail](#) for Windows 10

From: [Rory Goodwin](#)
Sent: Tuesday, January 21, 2020 4:31 PM
To: ddyocum@comcast.net
Subject: FW: Native American Scoping for the Lurin Land Development ObsidianTract Project in Riverside (DFD2001)

January 21, 2020

San Fernando Band of Mission Indians

Donna Yocum, Chairperson

P.O. Box 221838

Newhall, CA, 91322

Subject: Native American Scoping for the Lurin Land Development Obsidian Tract Project (LSA Project No. DFD2001)

Dear Ms. Yocum:

At the direction of the City of Riverside, LSA is conducting scoping notification for the Lurin Land Development Obsidian Tract Project. The project area includes 5.58 acres in Section 30 of Township 3 South, Range 4 West

(*Riverside East* and *Steele Peak, California* quadrangles; see attached Figure 1). There will be ground disturbance associated with the project.

The results of the Sacred Lands File search conducted by the Native American Heritage Commission for this project were negative. Please let us know if you have any comments.

Sincerely,

LSA ASSOCIATES, INC.

Riordan Goodwin

Archaeologist/Senior Cultural Resources Manager

Attachment: Figure 1 (Project Location)

Rory Goodwin

From: Alexandra McCleary <Alexandra.McCleary@sanmanuel-nsn.gov>
Sent: Wednesday, January 22, 2020 9:34 AM
To: Rory Goodwin
Subject: Native American Scoping for the Lurin Land Development Obsidian Tract Project in Riverside (DFD2001)

Dear Rory,

Thank you for contacting the San Manuel Band of Mission Indians (SMBMI) regarding the above-referenced project. SMBMI appreciates the opportunity to review the project documentation, which was received by the Cultural Resources Management Department on January 21, 2020. The proposed project is located outside of Serrano ancestral territory and, as such, SMBMI will not be requesting consulting party status with the lead agency or requesting to participate in the scoping, development, and/or review of documents created pursuant to legal and regulatory mandates.

Kind regards,
Alexandra McCleary

Alexandra McCleary

TRIBAL ARCHAEOLOGIST

O: (909) 864-8933 x502023

M: (909) 633-0054

26569 Community Center Drive Highland CA 92346

SAN MANUEL
BAND OF  MISSION INDIANS

THIS MESSAGE IS INTENDED ONLY FOR THE USE OF THE INDIVIDUAL OR ENTITY TO WHICH IT IS ADDRESSED AND MAY CONTAIN INFORMATION THAT IS PRIVILEGED, CONFIDENTIAL AND EXEMPT FROM DISCLOSURE UNDER APPLICABLE LAW. If the reader of this message is not the intended recipient or agent responsible for delivering the message to the intended recipient, you are hereby notified that any dissemination or copying of this communication is strictly prohibited. If you have received this electronic transmission in error, please delete it from your system without copying it and notify the sender by reply e-mail so that the email address record can be corrected. Thank You

Rincon Band of Luiseño Indians

CULTURAL RESOURCES DEPARTMENT

One Government Center Lane | Valley Center | CA 92082
(760) 749-1051 | Fax: (760) 749-8901 | rincon-nsn.gov



January 24, 2020

Sent via email: Rory.Goodwin@lsa.net

Rory Goodwin
LSA Associates, Inc.

Re: Native American Scoping for the Lurin Land Development Obsidian Tract Project (LSA Project No. DFD2001)

Dear Mr. Goodwin,

This letter is written on behalf of the Rincon Band of Luiseño Indians. We have received your notification regarding the above referenced project and we thank you for the opportunity to provide information pertaining to cultural resources. The identified location is within the Territory of the Luiseño people, and is also within Rincon's specific area of Historic interest.

Embedded in the Luiseño territory are Rincon's history, culture and identity. We do not have knowledge of cultural resources within or near the proposed project area. However, this does not mean that none exist. We recommend that an archaeological record search be conducted and ask that a copy of the results be provided to the Rincon Band. Upon review of the record search results, the Rincon Band recommends consultation with affiliated Tribes, such as the Rincon Band, to discuss possible development of mitigation measures and treatment and monitoring agreement.

If you have additional questions or concerns, please do not hesitate to contact our office at your convenience at (760) 297-2635.

Thank you for the opportunity to protect and preserve our cultural assets.

Sincerely,



Cheryl Madrigal
Tribal Historic Preservation Officer
Cultural Resources Manager



PECHANGA CULTURAL RESOURCES

Temecula Band of Luiseño Mission Indians

Post Office, Box 2183 • Temecula, CA 92593
Telephone (951) 770-6300 • Fax (951) 506-9491

Chairperson:
Neal Ibanez

Vice Chairperson:
Bridgett Barcello

Committee Members:
Andrew Masiel, Sr.
Darlene Miranda
Evie Gerber
Richard B. Searce, III
Robert Villalobos

February 3, 2020

Director:
Gary DuBois

Coordinator:
Paul Macarro

Cultural Analyst:
Tuba Ebru Ozdil

Planning Specialist:
Molly E. Escobar

VIA E-Mail and USPS

Riordan Goodwin
Archaeologist/Senior Cultural Resources Manager
LSA Associates, INC.
1500 Iowa Ave. STE 200
Riverside, CA 92507

RE: Request for Information for the Lurin Land Development Obsidian Tract Project in the County of Riverside, CA.

Dear Mr. Goodwin,

The Pechanga Band of Luiseño Indians ("the Tribe") appreciates your request for information regarding the above referenced Project. After reviewing the provided maps and our internal documents, we have determined that the Project area is not within reservation lands although it is within our ancestral territory.

At this time, the Tribe is highly interested in participating in this Project based on our cultural knowledge of the region. The Project is located within a Traditional Cultural Property (TCP), with recorded sites directly surrounding it. After reviewing the historic aerials, the Tribe understands that the Project area was previously used as an orchard, however, the Tribe has seen in several occasions that Tribal resources were unearthed and trapped within the root systems of the Trees. Therefore, given the nature of the recorded sites surrounding the Proposed Project area and the TCP, the scope of work will likely impact Tribal resources.

The Tribe is dedicated to providing comprehensive cultural information to you and your firm for inclusion in the archaeological study as well as to the Lead Agency for CEQA review. At this time, the Tribe requests the following so we may continue the consultation process and to provide adequate and appropriate recommendations for the Project:

- 1) Notification once the Project begins the entitlement process, if it has not already;
- 2) Copies of all applicable archaeological reports, site records, proposed grading plans and environmental documents (EA/IS/MND/EIR, etc.);
- 3) Government-to-government consultation with the Lead Agency; and
- 4) The Tribe believes that monitoring by a Riverside County qualified archaeologist and a professional Pechanga Tribe monitor may be required during earthmoving activities. Therefore, the Tribe reserves its right to make additional comments and recommendations once the environmental documents have been received and fully reviewed. Further, in the event that subsurface cultural resources are identified, the

Tribe requests consultation with the Project proponent and Lead Agency regarding the treatment and disposition of all artifacts.

As a sovereign governmental entity, the Tribe is entitled to appropriate and adequate government-to-government consultation regarding the proposed Project. We would like you and your client to know that the Tribe does not consider initial inquiry letters from project consultants to constitute appropriate government-to-government consultation, but rather tools to obtain further information about the Project area. Therefore, the Tribe reserves its rights to participate in the formal environmental review process, including government-to-government consultation with the Lead Agency, and requests to be included in all correspondence regarding this Project.

Please note that we are interested in participating in surveys within Luiseño ancestral territory. Prior to conducting any surveys, please contact the Cultural Department to schedule specifics. Please be advised, the lead contact for this project is our Cultural Analyst, Ebru Ozdil. She can be reached at eozydil@pechanga-nsn.gov or at (951) 770-6313. If you have any questions or concerns regarding this letter, please contact me at mescobar@pechanga-nsn.gov or 951-770-6314.

Sincerely,



Molly Earp-Escobar
Cultural Planning Specialist

From: [Travis Armstrong](#)
To: [Rory Goodwin](#)
Subject: RE: Native American Scoping for the Lurin Land Development Obsidian Tract Project in Riverside (DFD2001)
Date: Thursday, February 6, 2020 3:22:28 PM
Attachments: [image001.jpg](#)

Hello,

The Tribal Historic Preservation Office of the Morongo Band of Mission Indians acknowledges your letter on the above project. We appreciate efforts to safeguard tribal cultural resources through decisions informed by tradition, custom and knowledge of federally recognized tribal governments that are the subject-matter experts involving the significance and integrity of these resources.

The proposed project is within the ancestral territory and traditional use area of the Cahuilla and Serrano people of the Morongo Band of Mission Indians.

Projects within this area are potentially sensitive for buried deposits regardless of the presence of remaining surface artifacts and features. Our office wants to initiate government-to-government consultation and requests the following from the lead agency to begin meaningful consultation:

- A records search conducted at the appropriate California Historical Resources Information System (CHRIS) center with at least a 1.0-mile search radius. If you already have done this work, please furnish copies of the reports and site records generated through this search for us to compare to our records to begin productive consultation.
- Tribal participation during survey and testing, if this fieldwork has not already taken place. In the event that archaeological crews have completed this work, our office requests a copy of the Phase I study or other cultural assessments as soon as available.

Tribal cultural resources are non-renewable resources. Avoidance is the preferred alternative over removal, reburial or monitoring. We look forward to working with you to protect these irreplaceable resources out of respect for ancestors of the Morongo people who left them there, and for the people of today and for generations to come.

Sincerely,

Travis Armstrong
Tribal Historic Preservation Officer
Morongo Band of Mission Indians
951-755-5259
Email: thpo@morongo-nsn.gov

Morongo



From: Rory Goodwin [mailto:Rory.Goodwin@lsa.net]
Sent: Tuesday, January 21, 2020 4:53 PM
To: Denisa Torres
Cc: Travis Armstrong
Subject: FW: Native American Scoping for the Lurin Land Development Obsidian Tract Project in Riverside (DFD2001)

January 21, 2020

Morongo Band of Mission Indians
Denisa Torres, Cultural Resources Manager
12700 Pumarra Road
Banning, CA, 92220

Subject: Native American Scoping for the Lurin Land Development Obsidian Tract Project (LSA Project No. DFD2001)

Dear Ms. Torres:

At the direction of the City of Riverside, LSA is conducting scoping notification for the Lurin Land Development Obsidian Tract Project. The project area includes 5.58 acres in Section 30 of Township 3 South, Range 4 West (*Riverside East* and *Steele Peak, California* quadrangles; see attached Figure 1). There will be ground disturbance associated with the project.

The results of the Sacred Lands File search conducted by the Native American Heritage Commission for this project were negative. Please let us know if you have any comments.

Sincerely,

LSA ASSOCIATES, INC.

Riordan Goodwin
Archaeologist/Senior Cultural Resources Manager

Attachment: Figure 1 (Project Location)

The information contained in this communication is confidential. It is intended solely for use by the recipient and others authorized to receive it. If you are not the recipient, you are hereby notified that any disclosure, copying, or distribution of this information is strictly prohibited and may be unlawful.

For your safety, the contents of this email have been scanned for viruses and malware.



February 10, 2020

Riordan Goodwin
Archaeologist/Senior Cultural Resources Manager
LSA Associates, Inc.
1500 Iowa Avenue, Suite 200
Riverside, CA 92507

RE: Native American Consultation for The Lurin Land Development Obsidian Tract Project
In Riverside
City of Riverside, California
(LSA PROJECT No. DFD2001))

Dear Mr. Goodwin:

Thank you for contacting the Cabazon Band of Mission Indians concerning cultural resource information relative to the above referenced project.

The project is located outside of the Tribe's current reservation boundaries but within an area that may be considered a traditional use area. The Tribe, however, has no specific archival information on the site indicating that it may be a sacred/religious site or other site of Native American traditional cultural value.

We look forward to continued collaboration in the preservation of cultural resources or areas of traditional cultural importance.

Best regards,

Judy Stapp
Director of Cultural Affairs



From: [BobbyRay Esparza](#)
To: [Rory Goodwin](#)
Cc: [Anthony Madrigal Sr](#)
Subject: Re: Native American Scoping for the Lurin Land Development Obsidian Tract Project in Riverside (DFD2001)
Date: Wednesday, February 12, 2020 11:54:33 AM

Hello Mr. Goodwin,

The Cahuilla Band of Indians have received and reviewed the above project. Although this project is outside the Cahuilla reservation boundary, it is within the Cahuilla traditional land use area. We believe that cultural resources may be unearthed during construction. We request that a tribal monitor from the Cahuilla band be present during all ground disturbing activities and to be notified of all updates with the project moving forward. We appreciate your assistance in preserving Tribal Cultural Resources in your project.

Respectfully,

BobbyRay Esparza
Cultural Coordinator
Cahuilla Band of Indians
Cell: (760)423-2773
Office: (951)763-5549
Fax:(951)763-2808

From: Daniel Salgado <CHAIRMAN@CAHUILLA.NET>
Sent: Tuesday, January 21, 2020 7:57 PM
To: BobbyRay Esparza <Besparza@cahuilla.net>
Cc: Anthony Madrigal Sr <Amadrigalsr@cahuilla.net>
Subject: Fwd: Native American Scoping for the Lurin Land Development Obsidian Tract Project in Riverside (DFD2001)

Daniel Salgado
Tribal Council Chairman
Cahuilla Band of Indians

From: Rory Goodwin <Rory.Goodwin@lsa.net>
Sent: Tuesday, January 21, 2020 4:42:59 PM
To: Daniel Salgado <CHAIRMAN@CAHUILLA.NET>
Subject: FW: Native American Scoping for the Lurin Land Development Obsidian Tract Project in Riverside (DFD2001)

January 21, 2020

Cahuilla Band of Indians
Daniel Salgado, Chairperson

52701 U.S. Highway 371
Anza, CA, 92539

Subject: Native American Scoping for the Lurin Land Development Obsidian Tract Project
(LSA Project No. DFD2001)

Dear Mr. Salgado:

At the direction of the City of Riverside, LSA is conducting scoping notification for the Lurin Land Development Obsidian Tract Project. The project area includes 5.58 acres in Section 30 of Township 3 South, Range 4 West (*Riverside East* and *Steele Peak, California* quadrangles; see attached Figure 1). There will be ground disturbance associated with the project.

The results of the Sacred Lands File search conducted by the Native American Heritage Commission for this project were negative. Please let us know if you have any comments.

Sincerely,

LSA ASSOCIATES, INC.

Riordan Goodwin
Archaeologist/Senior Cultural Resources Manager

Attachment: Figure 1 (Project Location)